



New Tech, New Life



Smart & Good Image

SS-10

Full Digital Laptop Ultrasound Scanner



Sonostar Technologies Co., Limited

Add: C Building, #27 Yayingshi Road, Science Town, Guangzhou, China

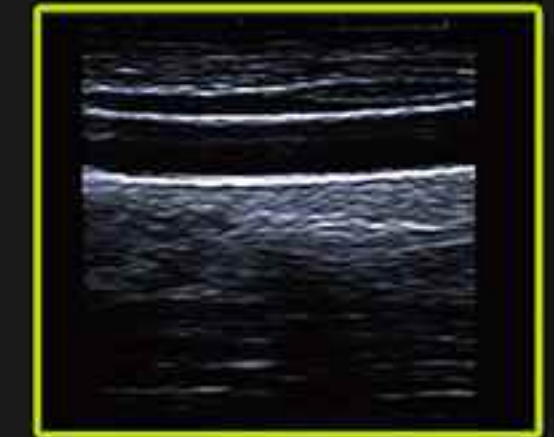
Tel: +86-20-32382095

Fax: +86-20-62614030

Web: www.sonostarmed.com

E-mail: sonostar@sonostar.net

- Full-digital Laptop Ultrasound Scanner
- Flexible and convenient operating system
- A type of high array, high definition, multi-function full-digital laptop ultrasonic diagnostic apparatus. Light and portable, more clearer, delicate and smooth image, convenient to operate
- supports the machine for consultation in various environment of cities, towns, outdoor
- A variety of charging to ensure the examination consultation under different environments
- Probes: convex probe, trans-vaginal probe, trans-rectal probe, high frequency linear probe, visual artificial abortion probe
- Supernormal battery life 4 hours
- 15 inch LED shows the images with more flexible ways
- USB port: storable and readable



Applicable object

Abdomen , obstetrics and gynecology , pediatrics , urology , small organs , muscu -loskeletal and so on , Widely used in expert visits , community service visits , 120emergency center , Large-scale medical examination car , Severe patient , bedside-examination of VIP wards etc



Specification

1. Display: 15 inch LED screen;
2. Probe Interface: Dual probe interface, with automatic identification function
3. Battery Capacity :removable lithium battery /6000 mAh
4. Display mode: B, B + B, 4b, B + m, m;
5. Four encoders, knob design, quick and convenient operation
6. Simple operation interface, easy to understand, ready to use
7. Movie playback: 256 frames, can be played back frame by frame and pause playback, pause playback can be used for image preservation and measurement
8. Language: Chinese/English
9. Electron focusing: four stage electron focusing;
10. There were more than 18 body position markers;

11. Frequency conversion: All probes support five-stage frequency conversion;
12. Image mirror: upper and lower mirror, left and right mirror, black and white flip;
13. Measurement: Professional software measurement package;
14. Character display: date, clock, name, gender, age, doctor, hospital, comment (full-screen character editing);
15. Gain range: 0-135db;
16. Interface: video interface, two USB interface, DICOM interface, VGA interface, power interface
17. Permanent storage: 16G built-in storage, can also be connected to external U disk storage
18. Grey scale: level 256
19. Dynamic range: 0-135db;
20. With the function of puncture guidance, puncture line position can be adjusted
21. With the function of rock positioning and dynamic target tracking
22. Front process: variable aperture, dynamic trace change, dynamic digital filtering, etc
23. After the process: 8 kinds of γ correction, line correlation, 16 level frame correlation, point and line correlation, linear interpolation, digital spatio-temporal filtering, digital edge enhancement, 8 kinds of false color processing, etc
24. Blind area: ≤ 4
25. Maximum display depth :300mm
26. Geometric accuracy: transverse $\leq 5\%$, longitudinal $\leq 5\%$
27. Resolution: lateral $\leq 2\text{mm}$, axial $\leq 1\text{mm}$
28. Display magnification: 16 display modes; Lesion diagnosis is more accurate.
29. Enhanced depth display.